

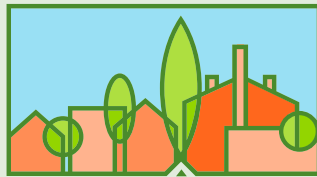


DELTRIDGE
NEIGHBORHOODS
DEVELOPMENT ASSOCIATION

CROSSROADS CAMPAIGN

Invest in the Delridge
of tomorrow





Mission

Integrating Art, Nature, and Neighborhood to build and sustain a dynamic Delridge.

Vision

A vibrant and thriving Delridge.

DNDA acknowledges that we work and live on stolen Coast Salish land, specifically the ancestral lands of the Duwamish, Suquamish, Stillaguamish, and Muckleshoot People. We honor with gratitude the land itself and the Coast Salish tribes, whose people still steward this land today.

Sustaining a Dynamic Delridge

With a vital cultural community, a diversity of residents, and abundant and rare green spaces, we must sustain the treasure that is Delridge.

We are at a crossroads. We have the opportunity to invest now in preserving the qualities that make our neighborhood unique. In 10 years, Seattle Light Rail will arrive with the potential of transforming the community we know and love if we don't make critical choices today.

The Crossroads Campaign was launched to invest in the Delridge of tomorrow — one that continues to be lush, diverse, and vibrant, and is affordable to all those who live here now.

Integrating Art, Nature, and Neighborhood

DNDA emerged to inspire and sustain the incredible vibrancy of the Delridge Neighborhood by supporting art, nature, and neighborhood — core to community.

With a grounding in social, racial, and environmental justice, our initiatives focus on:

- ➔ Providing vital arts and cultural opportunities, including education and youth programs for our neighbors and future leaders.
- ➔ Enhancing the natural environment to support healthy humans and habitat.
- ➔ Preserving and growing affordable housing for a range of incomes.





ART



Artists and cultural leaders contribute to our region's vibrancy.

The Youngstown Cultural Arts Center is their cornerstone.

Youngstown is a historic school converted into a home for community organizations, dynamic event space, and affordable housing for artists. It serves as the artistic and civic anchor of the Delridge neighborhood, while engaging artists and cultural leaders from across Seattle. Youth and adults from the neighborhood and surrounding areas have a safe space to craft mesmerizing performances, attend inspiring events, and discover the thrill of cooking — all in one building.

A Youngstown Snapshot

- ➔ 50,000 youth and adults served annually, pre-pandemic
- ➔ Home to community organizations like YMCA and Arts Corps
- ➔ A regional hub for artists and civic programming
- ➔ Food justice programming in our kitchen
- ➔ Safe spaces full of connection, agency, and pathways towards meaningful careers and artistic pursuits for youth

“DNDA understands the idea of co-creation — making sure artists should have the same benefits and income as a lawyer, as well as the same opportunities — to have a home, a space to do your art/music.”

— High Point Community Member

Preserve an enduring arts and culture asset.

We take our responsibility as owner of a community asset seriously. DNDA's strategy for ensuring Youngstown remains an accessible resource is to take the long view, ensuring the building itself will endure. By investing in its preservation, we are investing in our collective community health.

The Crossroads Campaign will make essential upgrades and modernizations to a historic community building.

Your investment will:

Create a state-of-the-art space for performance through upgrades to the Thelma Dewitty Theater.

Stabilize the concrete slab on the building's south end to curb ongoing settling, allowing us to plan and make additional long-term renovations.

Replace our aging south roof.

Upgrade the kitchen to commercial standards, allowing entrepreneurial food programming.

Modernize HVAC systems for efficiency and noise-reduction.

Maintain and preserve the building's historic wood windows and doors, and stucco retaining wall.

Youngstown's collaborative tenant organizations include:

Arts Corps unlocks the creative power of youth through arts education.



Totem Star empowers youth through music production and performance.



YMCA Alive and Free program serves youth and young adults impacted by violence and/or the justice system.



West Seattle Tool Library provides tools, classes, and resources for community projects.





The Longfellow Creek Watershed is a neighborhood ecosystem being lovingly restored.

Delridge Wetland Park will help keep it healthy.

Longfellow Creek flows from Roxhill Park through the Delridge Neighborhood and down to the Duwamish River. Two thirds of the creek flow is open to the air, creating opportunities for us to delight in nature's wonder. Yet along the way, creek health is threatened by stormwater runoff.

DNDA is leading the transformation of a former electrical substation back into a fully functioning wetland. This important natural area will filter stormwater and decrease polluted runoff flowing directly into Longfellow Creek, while teaching young people about salmon, water quality, and healthy ecosystems.

Longfellow Creek Facts

- Flows four miles — from Roxhill Bog, Seattle's only remaining peat bog, formed 10,000 years ago, through Roxhill and Delridge neighborhoods to the Duwamish
- 1 of 2 Seattle creeks with spawning Coho salmon
- An urban oasis for muskrats and beavers
- Gravely impacted by toxic stormwater runoff, resulting in:
 - 50-80% pre-spawning mortality rate for salmon
 - Decreasing species diversity
- Susceptible to frequent flooding after rain events, impacting surrounding residents

Build a healthy ecosystem with us.

DNDA designed and is building the Delridge Wetland Park with community volunteers and 3rd, 4th, and 5th graders from nearby schools who will use this space as their outdoor community classroom. The park will offer an immersive, hands-on experience in wetland ecology. Besides contributing to the possibility of a healthy urban salmon run, it will also help to decrease neighborhood flooding.

When it's complete, Delridge Wetland Park will offer one more place for children to explore and learn, and neighbors to reconnect with nature.

The Crossroads Campaign supports the completion of Delridge Wetland Park.

Your investment will:

Build an outdoor classroom and gathering space.

Add native plants to the streetscape while filtering stormwater runoff.

Support efforts to maximize the wetland's filtration capacity.

Build new pathways and boardwalks to welcome students and wetland visitors.

Create a safe route for students from nearby Louisa Boren STEM K-8 to the park.

"The nature programming is really good at understanding the history and the connection to the land and its stewardship, and the connection between the present and the past in the work — going from forgotten land, to restoration, to classroom."

— DNDA Board Member and Delridge Neighbor





NEIGHBORHOOD



Having a safe, affordable place to call home is the foundation for a thriving community.

DNDA is working to ensure Delridge thrives for decades to come.

Housing costs have risen across Seattle neighborhoods, and Delridge is no exception. As Seattle continues to grow, and light rail connects to West Seattle, our neighborhood will experience the impacts of further gentrification. We must take steps now to preserve and add affordable housing, and to ensure the community's voices inform the direction of any development and transportation planning.

DNDA's Work in the Neighborhood

- Own 144 units of affordable housing at 7 sites
- Offer homes for 350 residents, including artists and families
- Serve families making 30 – 50% of area median income
- Offer programming including financial literacy, tutoring, and summer youth activities



We must ensure that all families, regardless of income, can afford to live in the Delridge neighborhood — and that they have a voice in its future.



Invest in the livability of Delridge.

DNDA's Neighborhood Initiative is gearing up to ensure the continued livability of Delridge. We are poised to grow affordable housing for families by more than 100 units, and to ensure Delridge voices are engaged and at the table for pivotal conversations about transportation and growth.

The Crossroads Campaign will grow affordable housing and support community engagement.

Your investment will expand staffing capacity to:

Lead equitable engagement with neighbors and local businesses.

Ensure a wide range of community voices are part of civic and transportation projects.

Develop more low-income and mixed-use affordable housing for families in Delridge.

Co-develop plans for new, dynamic mixed-use transit-oriented development with community partners.

“In 10 years, we will see the largest shift in the Delridge community ever as Sound Transit comes in. There will be cultural displacement. DNDA needs to be on top of that to GROW the community rather than replace the community.”

— DNDA Champion



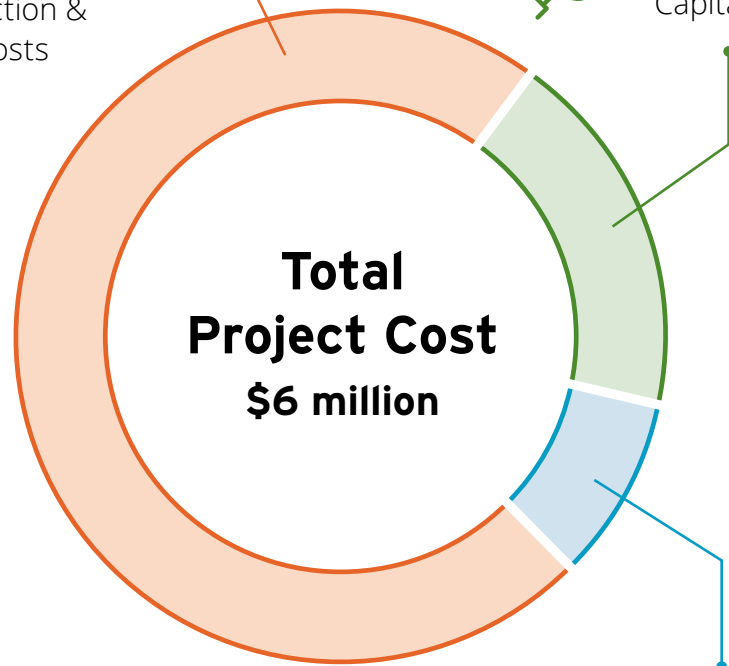
Crossroads Campaign Goals



ART
\$4 million
Construction & design costs



NATURE
\$1.5 million
Capital improvements



NEIGHBORHOOD
\$500,000
Staffing, professional fees, prospecting properties



Make a gift today.

Art, nature, and neighborhood are the lifeblood of community, and the priorities that guide our organization. The Crossroads Campaign will support a thriving Delridge that is culturally vibrant, lush in its green space, and diverse — one that is livable for everyone well into the future.



Join us in building and sustaining a dynamic Delridge!



Scan to give today or visit
dnda.org/crossroads-campaign



“Community building, placemaking, holistic...
DNDA is a great example of how people can
create and thrive regardless of their income level.
DNDA is sharing-oriented and communal. They
don't do just one thing, they do many things, but
they're all interconnected with their values.”

— *High Point Community Leader*



DELRIDGE
NEIGHBORHOODS
DEVELOPMENT ASSOCIATION

Contact us

development@dnda.org
(206) 935-2999